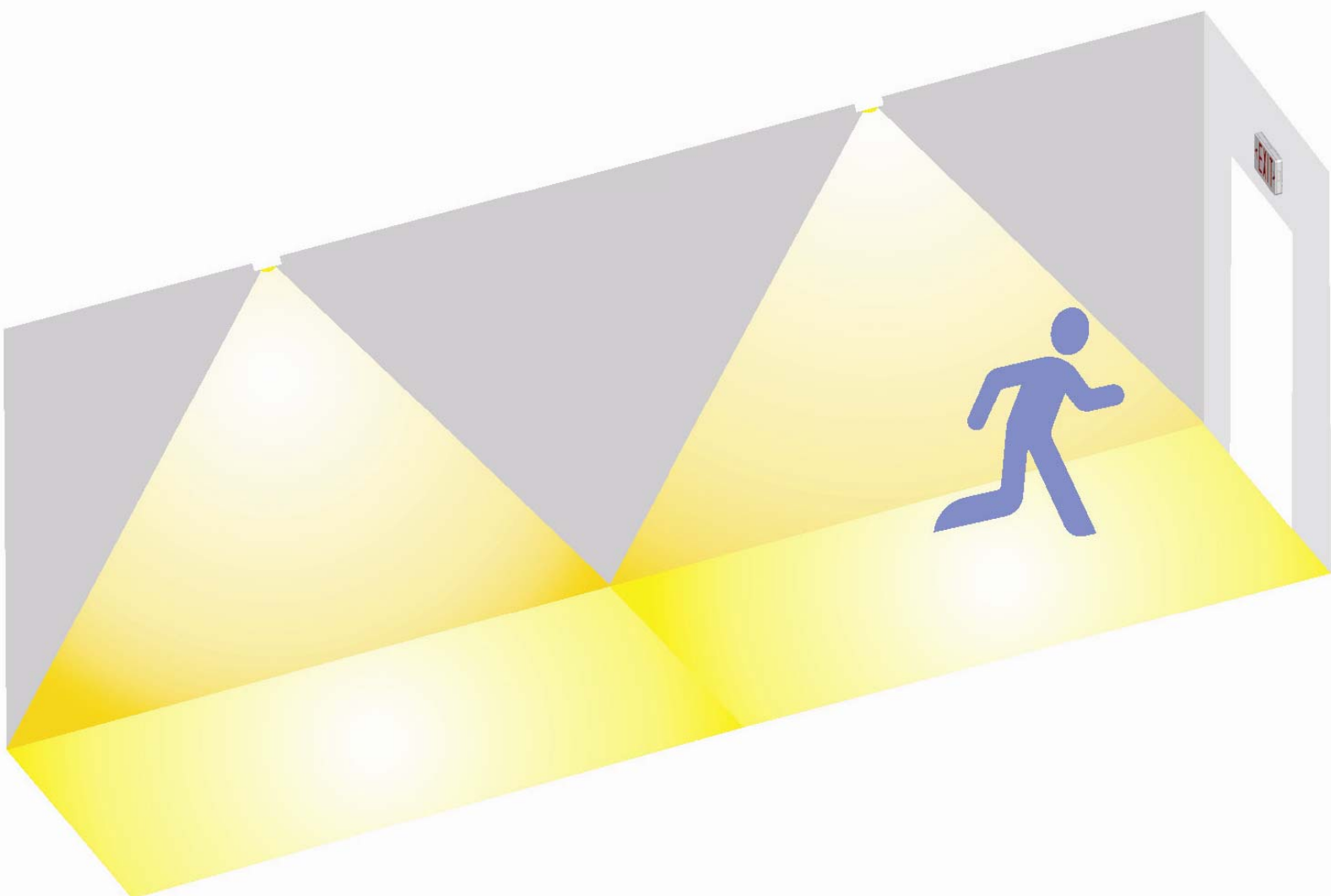


SPECIFICATION SHEET FOR LED PORTABLE LUMINAIRE WITH EMERGENCY FUNCTION

EXL-660P Series



Je Woo Corporation, Ltd.
Dong Sheng Industrial Park, Dong Sheng Village, Chen Jiang
Subdistrict office, Zhong Kai High-Tech Development Zone, Hui
Zhou City, Guang Dong, P.R.C.
Tel: 86-752-312-5585
Fax: 86-752-312-5586 / 5587

Table Of Content

Revision History -----	1
Product Photo -----	2
Product Dimension-----	2
Product Feature-----	2
Order Guide-----	2
Model List and Electrical Parameter-----	3
Discharge Switch and Test Switch & charge indicator-----	3
Plug-in Configuration -----	3
Exploded and Material list-----	4
Photometric-----	5
Packaging -----	5
Certificate -----	6

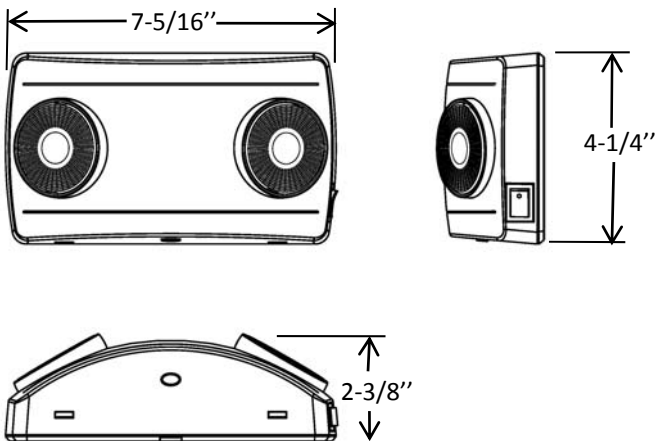
Revision History

Revised Symbol	Revised Description	Version	Revised By	Revised Date
	New create	E.0	Harris Chen	2015.11.4

Product Photo



Product Dimension



Order Guide

Family	Lumen Output & Charge and Discharge time	Housing color
EXL-660P	Blank: 120-240VAC 60Hz input, charge 24 hours, discharge 1.5 hours, 3.6V1000mA Ni-cad battery, 1W LED*2pcs, provided 150lm output. manual test	W: White
	HO: 120-240VAC 60Hz input, charge 24 hours, discharge 1.5 hours, 2pcs 3.6V1000mA Ni-cad battery, 2W LED*2pcs, provided 250lm output. manual test	
	4H: 120-240VAC 60Hz input, charge 48 hours, discharge 4 hours, 2pcs 3.6V1500mA Ni-MH battery, 1W LED*2pcs, provided 150lm output. manual test	

Product Feature

Housing

- Injection-molded thermoplastic ABS housing.
- Plastic enclosure with 5VA flame retardant.
- Fixture with plug-in type connector, suitable for residential market.
- Two fully adjustable glare-free square shape light heads for emergency light.

Electrical

- AC 120-240V 60Hz voltage operation.
- Power consumption 1.2 Watts max.
- Test switch and charge rate indicator.
- 3.6V long-life, maintenance-free, rechargeable Ni-Cad battery or Ni-Mh battery.
- Provided discharge switch control luminaire on or off.

Illumination

- Use SMD high power LED,CCT 6000K, L70 35,000 hours.
- 1 watt per head for standard model, 150lm output from luminaire.
- 2 watts per head for high lumen model, 260lm output from luminaire.

Mounting

- Install on wall socket directly.

Warranty/Listing

- Warranty for unit 3 years, warranty for battery 2 years.
- Suitable for use in 10°C-40°C ambient temperature, suitable for dry location.
- UL and cUL standard for Class 2 Power Units, UL 1310, and for Motor-Operated Appliances, UL 73.
 Canadian Standard for Portable Luminaires, C22.2 No. 12, and for Power Supplies with Extra-Low Voltage Class 2 output, CAN/CSA-C22.2 No. 223-M91.

Model List and Electrical Parameter

Model Number	Input Voltage	Charge Duration	Discharge Duration	Battery	Power Consumption	LED	Lumen Output
EXL-660P-W	120-240VAC 60Hz	24H	1.5H	Ni-cad 3.6V 1Ah *1pc	0.6W Max.	SMD 1W 6000K	150lm
EXL-660P-HO	120-240VAC 60Hz	24H	1.5H	Ni-cad 3.6V 1Ah *2pcs	1.2W Max.	SMD 2W 6000K	260lm
EXL-660P-4H	120-240VAC 60Hz	24H	4H	Ni-Mh 3.6V 1.5Ah *2pcs	1.2W Max.	SMD 1W 6000K	150lm

Discharge Switch and Test Switch & charge indicator



When normal AC supply fail, use discharge switch control LED lamp ON or OFF.



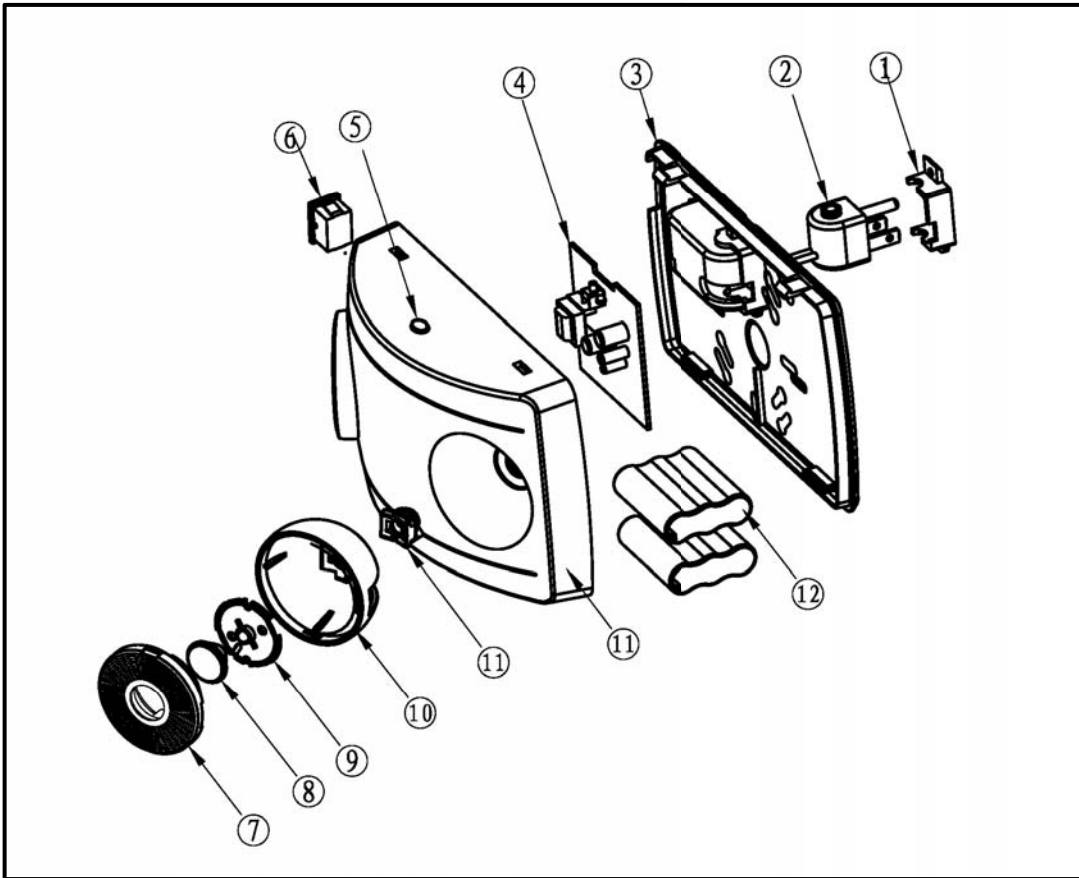
On normal condition, LED charge indicator show red, press test switch simulate AC power fail, LED charge indicator turn off.

Plug-in Configuration



No need wiring, unit plug in the wall socket directly.

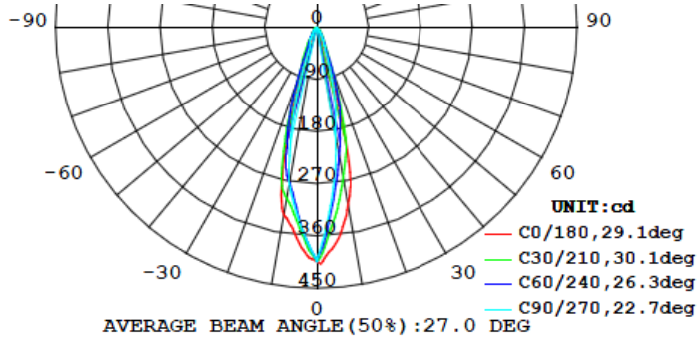
Exploded and Material List



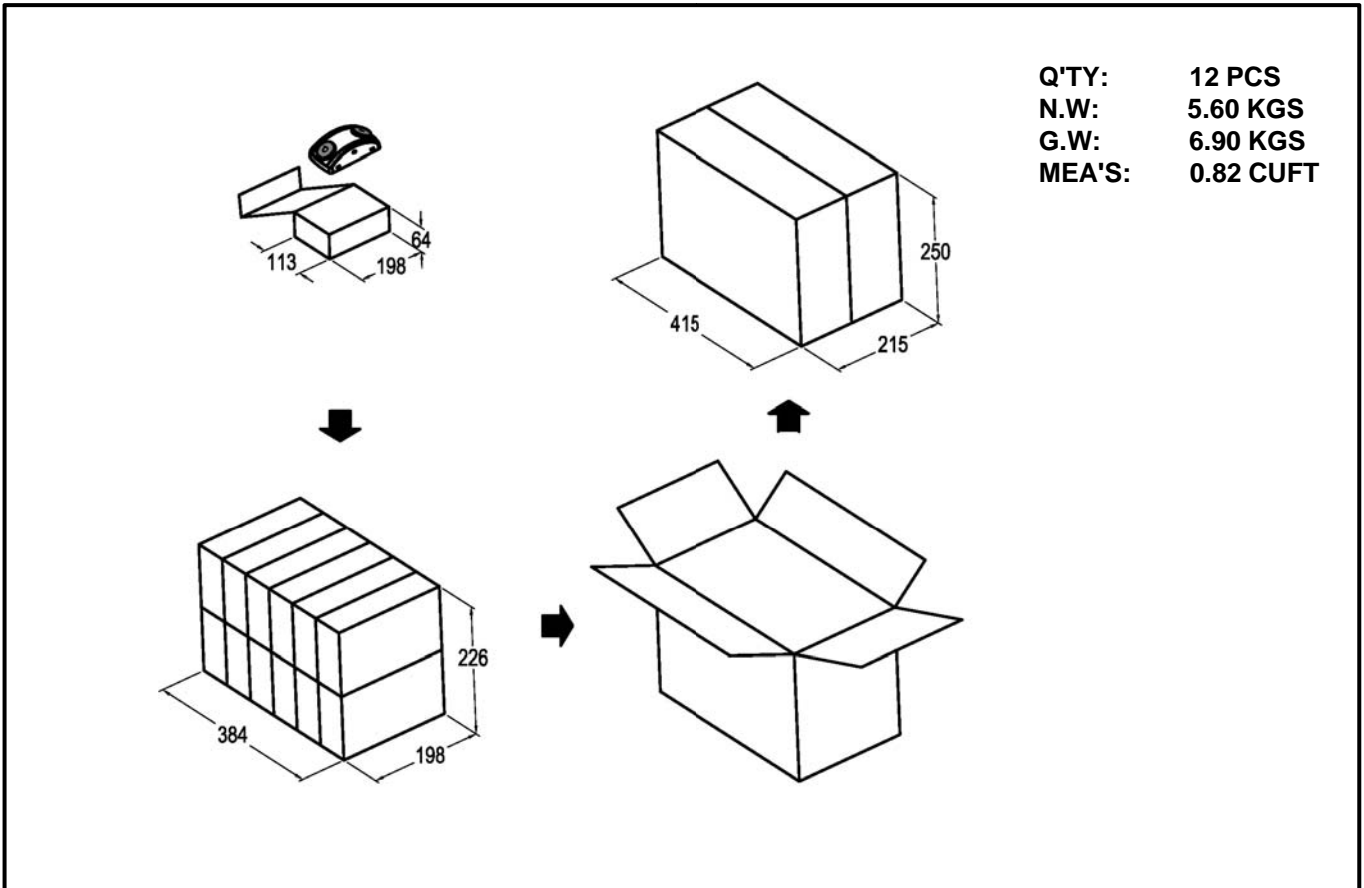
No.	Parts Name	Material	Q'Y
1	Plug holder	ABS	1pc
2	AC plug	PVC, Copper	1pc
3	Back plate	ABS	1pc
4	Main PCBA		1pc
5	Test button and charge indicator	Polycarbonate	1pc
6	Discharge switch	Nylon, Copper	1pc
7	Clear cover	Polycarbonate	2pcs
8	Lens	PMMA	2pcs
9	LED PCBA	ABS	2pcs
10	Lamp housing	ABS	2pcs
11	Housing	ABS	1pc
12	Ni-cad or Ni-Mh battery		1pc@2pcs

Photometric

Luminous intensity distribution (single head)



Packaging



CERTIFICATE OF COMPLIANCE

Certificate Number 20151028-E478272
Report Reference E478272-20151028
Issue Date 2015-OCTOBER-28

Issued to: JE WOO CORP LTD
Dong Sheng Industrial Park
Dong Sheng Vlg
Chen Jiang Town, Hui Cheng Zone
Hui Zhou
Guang Dong 516229 CHINA

**This is to certify that
representative samples of**

FLASHLIGHTS AND LANTERNS, RECHARGEABLE AND
AUTOMATIC

Rechargeable Flashlight, Models EXL-660P, EXL-660P-
HO, EXL-660P-4H

Have been investigated by UL in accordance with the
Standard(s) indicated on this Certificate.

Standard(s) for Safety:

UL 1310 - Class 2 Power Units
UL 73 - Motor-Operated Appliances
C22.2 No. 12-1982 - Portable Luminaires
CSA C22.2 No. 223-M91 - Power Supplies with Extra-low
Voltage Class 2 Outputs

Additional Information:

See the UL Online Certifications Directory at
www.ul.com/database for additional information

Only those products bearing the UL Certification Mark should be considered as being covered by UL's
Certification and Follow-Up Service.

Look for the UL Certification Mark on the product.



Bruce Mahrenholz, Director North American Certification Program

UL LLC

Any information and documentation involving UL Mark services are provided on behalf of UL LLC (UL) or any authorized licensee of UL. For questions, please
contact a local UL Customer Service Representative at <http://ul.com/about/locations/>

